



Graduate School of Social Sciences and Humanities

**Annual Report
June 2013 – May 2014**

Prof. Dr. Zeynep Aycan, Director

1. Executive Summary

Overview of our Program:

- GSSSH completed its 11th year with **21 graduate programs**, current student population of 240 and alumni population exceeding 310.
- GSSSH programs are growing to include **faculty members from 4 colleges**: College of Social Sciences and Humanities, College of Administrative Sciences and Economics, Law School, and College of Engineering.
- GSSSH currently offers MA and Ph.D. degrees in the following **programs with thesis**:
 - Design, Technology, Society (MA and Ph.D.) (*interdisciplinary program combining MAVA, Psychology, Sociology, Archeology, and Engineering*)
 - Archeology and History of Art (MA and Ph.D.) (*interdisciplinary program combining Archeology and History of Art*)
 - Comparative Studies in History and Society (MA) (*interdisciplinary program combining Sociology and History*)
 - Psychology (MA and Ph.D.)
 - Economics (MA and Ph.D.)
 - International Relations (MA and Ph.D.)
 - Master's in Private Law (LL.M.)
 - Master's in Public Law (LL.M.)
- Non-thesis programs were launched in 2013. We currently have students admitted to the following programs:
 - Non-Thesis MA Program in Economics
 - Non-Thesis MA Program in International Relations
 - Non-Thesis MA Program in Psychology
 - Non-Thesis Master of Laws (LL.M) in Public Law
 - Non-Thesis Master of Laws (LL.M) in Private Law

Achievements in 2013-2014:

- GSSSH will graduate first cohort of Ph.D. students this year.
- Quality of admitted students continues to improve in 2013-2014 Academic Year: number of student with GPA > 3.00 and ALES > 80 increased from 45 in 2012, to **57** in 2013.
- Number of publications and conference presentations authored or co-authored by graduate students increased significantly from last year (please see **Table 1**). This significant achievement of our graduate students will contribute to the **world-wide reputation** of our graduate programs and our university as a whole.
- We continue to promote and encourage **Joint Degree collaborations**. Arzu Aydınlı is the first Ph.D. student to benefit from Koc University-Tilburg University Joint Degree Program in Psychology.

Ayşen Üstübcü will receive Dual Degree in Ph.D. in Political Science (i.e., 2 diplomas) from Koc University and Amsterdam University.

We are in the process of establishing joint degree agreements for 2 of our Ph.D. students in the ARHA program (Nottingham University and University of Amsterdam).

Table 1. GSSSH in Numbers.

	<i>2009/2010</i>	<i>2010/2011</i>	<i>2011/2012</i>	<i>2012/2013</i>	<i>2013/2014</i>
• Total number of applicants	298	324	375	589	600* (Currently 400)
• Total Number of Ph.D. applicants	27	45	70	130	150* (Currently 101)
• Number of applicants from foreign universities	42	57	62	92	100*
• Average GPA of admitted students	3.45	3.48	3.52	3.62	3.60
• GPA of students in the Graduate programs	3.52	3.58	3.61	3.65	3.70
• % of Students admitted with External funding	24	30	36	49	48
• Number of conference papers presented by graduate students	14	28	48	56	127
• Number of publications (co)authored by graduate students	10	29	33	52	58

*Applications continue, these numbers are projected.

2. GSSSH 2012-2013 Activities in Detail

Graduate School of Social Sciences and Humanities (GSSSH) is celebrating its 11th year with 240 students, 310 graduates and 21 graduate programs embracing a wide range of disciplines including Law, Economics, International Relations and Political Science, Design and Technology, History, Archeology, History of Arts, Sociology, and Psychology.

Mission: The mission of GSSSH is to develop leaders to contribute to science and practice in fields of social sciences by providing students with competencies and skills necessary to conduct high-quality research that has the potential to contribute to universal knowledge as well as social policies in Turkey.

Vision: In the next 5 years GSSSH aims to be recognized as the center of excellence to attract and develop best students in the world who have the highest potential to contribute to science and practice of social sciences and humanities. GSSSH alumni will be employed as academics in the best National and International Universities around the world, or as employees in the most competitive jobs in industry, government, or NGOs.

GSSSH's current strategies to achieve the vision are to increase:

1. Institutionalization
2. Internationalization
3. Intellectual Stimulation
4. Dissemination of research output

To achieve these objectives the following activities were completed between September 2013 and May 2014.

1. Institutionalization

- Ph.D. milestones & scholarship regulations

2. Internationalization

- Erasmus internship programs
- Graduate student exchange agreements
- GSSSH International Summer Schools

3. Intellectual Stimulation

- Distinguished Scholar Series & Special Seminars
- Extra trainings and summer Schools attended by our students
- Workshops organized by GSSSH

4. Dissemination of research output

- Conference participation
- Publications
- New course on writing and publishing research papers
- Awards and recognition received by graduate students

Activities to Increase Institutionalization

➤ Professionally Managed Student Recruitment Activities

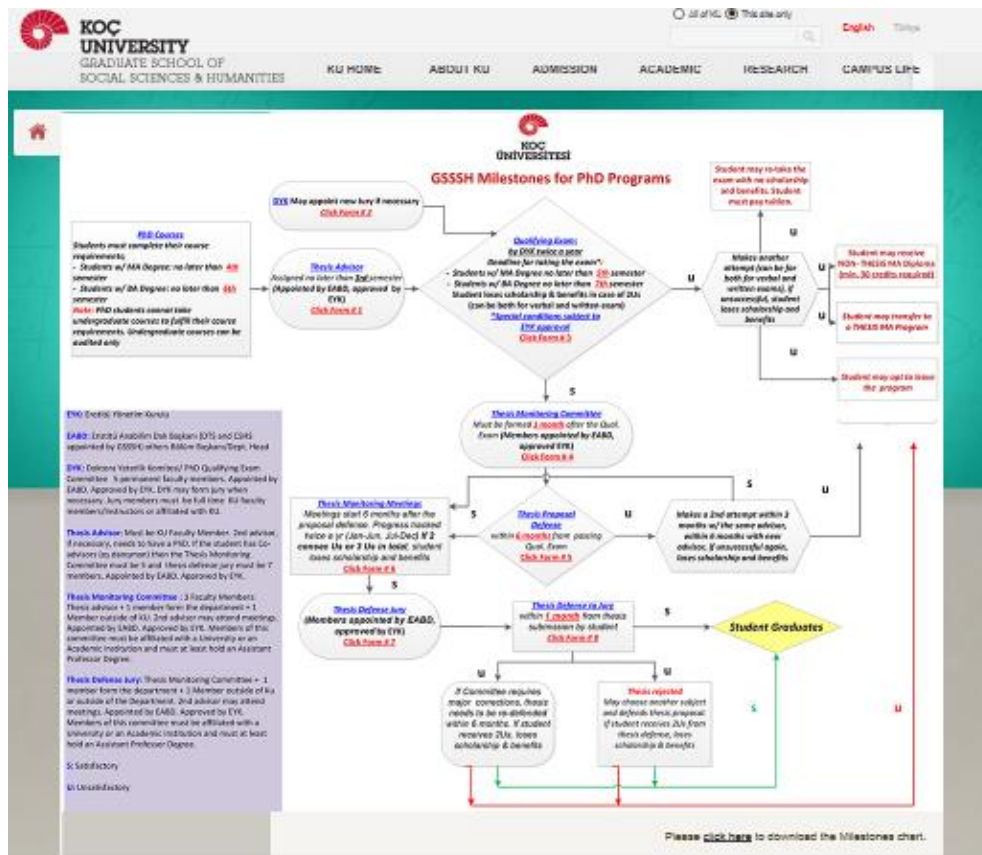
- Renewed Posters
- Website Updates
- Newspaper Ads
- Worldwide Announcement of our programs
- Electronic Banners
- Press Release
- Information Sessions

➤ New scholarship regulation

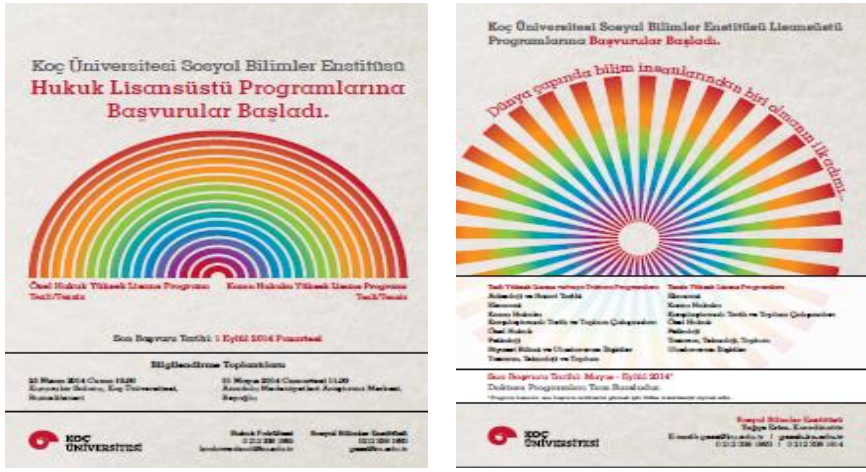
According to the new YOK regulation students cannot be expelled from programs for any reason. We had to revise our scholarship regulations in light of this new YOK rule. Our new scholarship regulation shared with students and faculty outlines the conditions under which graduate scholarships are terminated (<http://registrar.ku.edu.tr/procedures-for-scholarships>).

➤ Ph.D. Milestones

To align with YOK's rules and regulations student regulatory requirements, we have designed a Milestones Chart which includes all the phases that a Ph.D. student need to follow during their education life cycles. The official forms they need, i.e. Thesis Defense Comitee appointment, Thesis Monitoring Reporting, Ph.D. Quaifying Exam Reports, are also available on the chart and can be accessed from our websites: <http://gssh.ku.edu.tr/gssh-phd-programs-milestones>



➤ **Renewed Posters and Communication Materials**

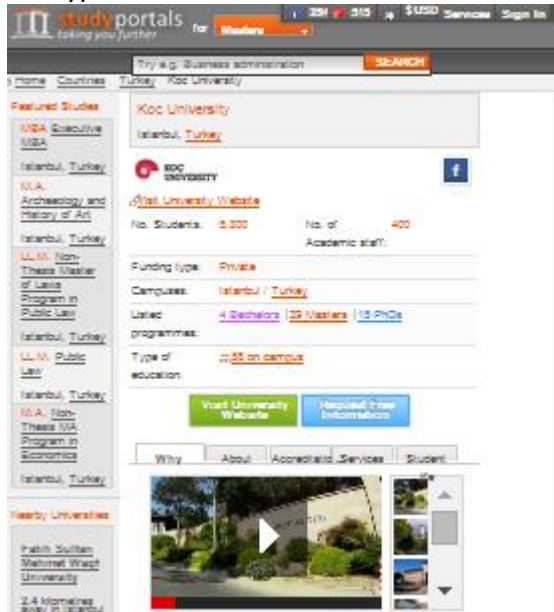


➤ **GSSSH Information Session Announcements Published in the following outlets:**

- Hürriyet Newspaper
- Radikal Newspaper
- Mesele Magazine
- 1+1 Magazine
- Cognito Magazine
- Bianet.org Website
- Medyatava.com Website

➤ **Worldwide Announcement of our programs:**

1. Masterstudies.com
2. Studyportal.com



Information Sessions for applicants

- 27 Şubat 24 Hours at KU, Koç University , 18 Attendees (Ph.D. Only)
- 21 March GSSSH Information Session, RCAC 28 Attendees

- 24 April GSSSH Information Session, Koç University 25 Attendees



Activities to Increase Internationalization

➤ GSSSH students in Erasmus / Exchange Programs

- **Utrecht University, Exchange Student**
Yaşar Şaşıoğlu (INTL MA 2)
- **University of Nottingham, Occasional Research Student**
Gonca Dardeniz (ARHA Ph.D. 3)
- **Leiden University, Exchange Student**
Melis Yavuz (PSYCH Ph.D. 2)
- **Newcastle University, Kara Dağ HLC and Landscape Analysis Project**
Yasemin Özarslan (ARHA Ph.D. 3)
- **International Migration Institute University of Oxford, Visiting Fellow**
Ayşen Ezgi Üstübici (INTL Ph.D. 5)
- **Royal Holloway, University of London, Department of Politics and International Relations, Visiting Fellow**
Mustafa Kutlay (INTL Ph.D. 4)
- **University of London, Department of Politics and International Relations, Visiting Fellow**
Mustafa Kutlay (INTL Ph.D. 4)
- **Queen's University, Belfast, Centre for the Study of Ethnic Conflict, Visiting Reseracher**
İmren Borsuk (INTL Ph.D. 5)
- **Harvard University, Department of Government, Visiting Fellow**
Ömer Faruk Örsün (INTL Ph.D. 5)
- **VU Vrije Universiteit Amsterdam, Exchange Student**
Gizem Dörter (ARHA Ph.D. 3)
Lauren Nicole Davis (ARHA Ph.D. 3)
- **New Castle University, Exchange Student**
Fatma Coşkuner (ARHA Ph.D. 3)

➤ **GSSSH Exchange Agreements**

Thanks to the hard work of the Office of International Programs, GSSSH has graduate student exchange agreements with over 90 universities in the world. (<http://oip.ku.edu.tr/>)

➤ **GSSSH International Summer Schools**

GSSSH, in collaboration with the Office of International Programs and RCAC, Boğaziçi University and Bilkent University initiated four Summer Programs to attract graduate students from the world.

Istanbul Graduate Summer School in Economics July 2014

The 1st Istanbul Graduate Summer School in Economics was organized by the economics departments of Bilgi University, Boğaziçi University and Koç University in the summer of 2013. During the summer school, Prof. Luca Gambetti from Universitat Autònoma de Barcelona taught a course titled Empirical Time Series Methods for Macroeconomic Analysis. Prof. Ramon Marimon from European University Institute taught a course titled Recursive Contracts: Theory and Applications. And Prof. Tayfun Sönmez from Boston College taught a course titled Matching Markets: Theory and Practice.

The 2nd Summer School will be held in July 2014, Koç University will be hosting.



*1st Istanbul Graduate Summer School, Boğaziçi University

Istanbul Through the Ages June 30 -22 July 2014



Being the center of magnificent empires through time, Istanbul is calling you to discover its rich cultural heritage by following the footmarks of saints, sultans and angels in this enriching summer seminar. Koç University Research Center for Anatolian Civilizations is excited to invite you to have a taste of İstanbul with its intellectual, in-depth program developed by world renowned Ottoman and Byzantine academicians.

Cappadocia in Context 16 June 2014 – 04 July 2014



Prof. Robert Ousterhout (University of Pennsylvania) and Dr. Tolga Uyar (University of Paris I), with the contribution of some esteemed faculty members from Koç University, will present Cappadocia through a combination of lectures, seminar discussions, site visits and field trips. A camera, sturdy walking shoes and a taste of exploration are essential!

Ottoman Epigraphy 21 July – 08 August 2014



Introduction to Ottoman Epigraphy" focuses on surveying the development of the Ottoman inscriptions from a chronological standpoint starting with the earliest examples in Anatolia. The program will take place in Istanbul and there will be a field trip to Bursa to study inscriptions of critical historical importance in situ. The program will be led by experts in the field from University of Chicago.

➤ GSSSH International Collaborations

In 2013 GSSSH successfully launched its first Joint Degree program in Ph.D. in Psychology with Tilburg University. Arzu Aydınli, Koç University Ph.D. 2nd year student in Psychology was the first student to be admitted to the program. The second foremost development in the previous year was signing a Protocol with University of Amsterdam governing the joint supervision and awarding 2 doctorate diplomas. We received YÖK's (Higher Education Council's) approval to launch this program for our Ph.D. student in IR, Aysen Ezgi Üstübcü. We are currently in negotiation terms with Binghamton University to launch a Joint Non-Thesis Program on Public Policy and we are also working on possible collaborations with the Archeology Departments of University of Nottingham, University of Amsterdam and Tilburg University.

Activities to Increase Intellectual Stimulation

GSSSH Distinguished Scholar Seminar Series

- ❖ Professor Malcolm Schofield, Emeritus Professor of Ancient Philosophy and Fellow of St John's College at the University of Cambridge 7 October, 2013
- ❖ Professor Bill Gaver, Interaction Research Studio Goldsmiths, University of London- 10 October, 2013

- ❖ Professor Alexander Cooley, Columbia University, Political Science Department at Barnard College, Columbia University 24 October, 2013
- ❖ Dr. Peter Hagoort, Director of the Max Planck Institute for Psycholinguistics- 23 December, 2013
- ❖ Professor James Ferguson, Stanford University, Department of Anthropology – 24 March, 2014
- ❖ Professor Joel Beinin, Stanford University, Department of Anthropology – 24 March, 2014
- ❖ Professor Larry Diamond, Stanford University, Department of Anthropology – 24 March, 2014
- ❖ Professor Nancy Adler, McGill University , S. Bronfman Chair in Management – 31 March, 2014
- ❖ Emeritus Professor Heath Lowry, Princeton University, Coordinator of Ottoman History Implementation and Research Center, Bahçeşehir University – 17 April, 2014
- ❖ Professor John Dunn, Cambridge University , Department of Politics and International Studies – 6 May, 2014



Dissemination of Research Output

Publications, Conference Presentation, Achievements

Student Name	Department	Title	Publications
Oğuz Turhan Buruk, Ahmet Güzerler, Mehmet Aydın Baytaş, Barış Serim		"altCHI"; speculative research subjects	"CHI 2039: speculative research visions" which is about the emerging technologies which can be the subjects of the 2039 CHI conference.
A. Burçin Erarslan Başkurt	PH.D. 3, PSYC	Girişimcilikte Başarı Kriterleri ve Temel Başarı Faktörleri: Kadın-Erkek Karşılaştırması (co-authored with Aycan, Z., Erdoğan, I., Kabasakal, H., Varnalı, R.)	KOÇKAM Ödüllü Araştırmalar (accepted for publication in 2015)

A. Burçin Erarslan Başkurt	PH.D. 3, PSYC	Gender Role Attitudes of Female Students in Single-Sex and Coeducational High Schools in Istanbul (co-authored with Rankin, B.)	Sex Roles: Special Issue on Single-Sex Education, 69, 7-8, 455-468. doi: 10.1007/s11199-013-0277-0
Agnese Lace	Ph.D. 1, INTL	Political Duality of Dual Citizenship - Diaspora versus Minorities: A Research Framework	INTEGRIM Online Papers 2/2014, January 2014
Arzu Aydınli	Ph.D. 4, PSYC	When does self-reported prosocial motivation predict helping: The moderating role of implicit prosocial motivation.	Aydınli, A., Bender, M., Chasiotis, A., Cemalcilar, Z., & van de Vijver (in press). <i>Motivation and Emotion</i> , XXX, DOI: 10.1007/s11031-014-9411-8
Arzu Aydınli	Ph.D. 4, PSYC	Motivational pathways leading to sustained volunteering: A four country study.	Aydınli, A., Bender, M., Chasiotis, A., Cemalcilar, Z., van de Vijver, A.J.R, Chong, A., & Yue, X. (manuscript accepted for publication, JCCP).
Aysel Arslan	MA 2, ARHA	Aşıklı Höyük'te Toprak Kimyası Analizi	Chasiotis, A., Cemalcilar, Z., & van de Vijver (in press). When does self-reported prosocial motivation predict helping: The moderating role of implicit prosocial motivation. <i>Motivation and Emotion</i> , XXX, DOI: 10.1007/s11031-014-9411-8
Ayşen Ustübcü	Ph.D. 5, INTL	"Dynamics in Emigration and Immigration Policies of Morocco: A Double Engagement"	<i>Migration and Development</i> , special issue on "EU migration legacies - perspectives from sending countries", forthcoming, in press
Ayşen Ustübcü	Ph.D., INTL	"Brief on the international Symposium 'Turkish-Greek Compulsory Population Exchange in its 90th Year: New Findings, New Approaches'"	Turkish Review, forthcoming (co-authored with Deniz Karıcı Korfalı).
Ayşen Ustübcü	Ph.D., INTL	Book Review: Banu Şenay. "Beyond Turkey's Borders: Long Distance Kemalism, State Politics and the Turkish Diaspora". London: I.B. Tauris, 2013	New Perspectives on Turkey, 49, Fall 2013, pp. 171-177.
Ayşen Ustübcü	Ph.D., INTL	"New Border and Citizenship Politics: Negotiating Mobility, Debating Borders: Migration Diplomacy in Turkey-EU relations"	book chapter in in Helen Schwenken and Sabine Ruß (Eds.) , Pages:254 , 2014, Basingstoke, Hampshire, Palgrave Macmillan, Forthcoming (co-authored Ahmet İçduygu).
Ayşen Ustübcü	Ph.D., INTL	Migration To And From Turkey : Changing Patterns And Shifting Policies	edited book, 2014, Istanbul: ISIS (co-edited with Ayşem Biriz Karaçay).
Ayşe Beyza Ateş Şen	Ph.D. 3, PSYC	The impact of caregiver feedback on children's referential choices.	In L. Serratrice & A. Shanley (Ed.), <i>The Acquisition of Reference</i> . Amsterdam: John Benjamins.
Ayşe Beyza Ateş Şen	Ph.D. 3, PSYC	Crosslinguistic and crosscultural approaches to pragmatic development.	In D. Matthews (Ed.), <i>Pragmatic Development in First Language Acquisition</i> . Amsterdam: John Benjamins.
Berivan ECE USTA	Ph.D. 4, PSYC	The Impact of Suppressing the Typical Life Events on the Reminiscence Bump	Ece, B. & Gulgoz, S. (Final revision). The Impact of Suppressing the Typical Life Events on the Reminiscence Bump. <i>Applied Cognitive Psychology</i> .
Berna Akçınar	Ph.D. 4, PSYC	Parental Control Is Not Unconditionally Detrimental for Externalizing Behaviors in Early Childhood	International Journal of Behavioral Development
Berna Akçınar	Ph.D. 4, PSYC	Ramifications of Social Stratification for Three Year Old Children and their Families in Turkey	Early Childhood Research Quarterly (under revision)
Bilgehan Çavdaroğlu	MA 2, PSYC	Time-based Reward Maximization (Bilgehan Çavdaroğlu, Mustafa Zeki, Fuat Balcı)	Philosophical Transactions B 2014
Birce Altıok Kerem Yıldırım	Ph.D. 3 Ph.D. 3 INTL	Book Chapter (under review) "Characteristics of Prolonged Social Movements: the Case of Gezi Park Protests" in <i>Contentious Politics in the Middle East (Temporary)</i> ed. Fawaz Gerges	Forthcoming (2014)
Ceren Çoban	MA 2, INTL	Different Periods of Internal Migration in Turkey from the Perspective of Development	American International Journal of Contemporary Research, Vol.3, No. 10.
Damla Bayraktar Aksel	PH.D. 4, INTL	Kins, distant workers, diasporas: Constructing Turkey's transnational members abroad	Journal article, Turkish Studies (forthcoming)
Damla Bayraktar Aksel	PH.D. 4, INTL	Negotiating Readmission Agreement between the EU and Turkey: Two-to-Tango	Journal article, coauthored with Ahmet İçduygu, <i>European Journal of Migration and Law</i> (forthcoming)
Damla Bayraktar Aksel	PH.D. 4, INTL	Migration Realities and State Responses: Rethinking International Migration Policies in Turkey	Book chapter, coauthored with Ahmet İçduygu, in Stephen Castles, Malena Arias and Derya Özkul (Eds.), <i>Social Transformation and</i>

			Migration: National and Local Experiences in South Korea, Turkey, Mexico and Australia (forthcoming)
Damla Bayraktar Aksel	PH.D. 4, INTL	Türkiye-İrak sınır yönetiminde devlet ve yeni idare biçimleri	Book chapter, coauthored with Didem Daniş, in Didem Daniş and İbrahim Soysüren (Eds.), Sınır Dışı ve Sınır Üzerine Disiplinlerarası Bakışlar (forthcoming)
Damla Bayraktar Aksel	PH.D. 4; INTL	Turkish Migration Policies: A Critical Historical Retrospective	Journal article, coauthored with Ahmet İçduygu, Perceptions (Fall 2013)
Gitta Glöpker-Kesebir	Ph.D. 4, INTL	Women's rights in Turkey and the EU accession process: German media perspectives	Forthcoming. Journal of Women, Politics and Policy
Gizem Gündüz	MA 2, PSYC	Self-regulation mediates the link between family context and socio-emotional competence in Turkish preschoolers	Gunduz, G., Yagmurlu, B., & Harma, M. (pending minor revision). Early Education and Development.
Gizem Gündüz	MA 2, PSYC	Master Thesis	Under Minor Revisions. Early Education and Development Magazine , Routledge Press
Gonca Dardeniz	Ph.D. 2, ARHA	Geç Tunç Çağı'na Ait Bir İşlik Alanın İncelenmesi: Alalakh'ta Ateşli Teknolojiler	2013. 28. Arkeometri Sonuçları Toplantısı, Ankara, pp: 155-66.
Gonca Dardeniz	Ph.D. 2, ARHA	Alalakh (Tell Atchana Höyük): Geç Tunç Çağı'nda Cam Üretimine Ait Yeni Bulgular	2014. 29. Arkeometri Sonuçları Toplantısı, Ankara.
Gonca Dardeniz	Ph.D. 2, ARHA	Pyrotechnological Installations of LBIIa Alalakh, in <i>Tell Atchana, Ancient Alalakh</i>	Forthcoming.. Volume 2: The Late Bronze Age II City, (ed.) K. A. Yener, M. Akar, M. T. Horowitz, Istanbul: Koç University Press.
Gonca Dardeniz	Ph.D. 2, ARHA	Glass, Faience and Frit (in Small Finds Chapter), in <i>Tell Atchana, Ancient Alalakh</i>	Forthcoming. Volume 2: The Late Bronze Age II City, (ed.) K. A. Yener, M. Akar, M. T. Horowitz, Istanbul: Koç University Press.
Gonca Dardeniz	Ph.D. 2, ARHA	Sharing technologies for ceramics and vitrified materials, in <i>Overturning Certainties, Festschrift presented to Kutlu Aslıhan Yener for her 40 years of Field Archaeology in the Eastern Mediterranean</i>	Forthcoming. Ç. Maner, A. Gilbert, M. Horowitz, Brill Publications.
Gonca Dardeniz	Ph.D. 2, ARHA	Archeological and geological concepts on the topic of ancient mining	De Jesus, P. and Dardeniz, G. forthcoming in 2014. Archeological and geological concepts on the topic of ancient mining, <i>MTA bulletin</i> .
Gonca Dardeniz	Ph.D. 2, ARHA	Secondary Smelting: the Analysis of Three Kinet Höyük Copper-Based Samples	Forthcoming. Yener, K. A. and Dardeniz, G. forthcoming. Secondary Smelting: the Analysis of Three Kinet Höyük Copper-Based Samples, <i>Gates Festschrift</i> .
Gonca Dardeniz	Ph.D. 2, ARHA	The Discovery of New Tin Mines and Production Sites near Kültepe, Ancient Kanesh in Turkey: a Third Millennium BC Highland Production Model, <i>Antiquity</i> .	Forthcoming. Yener, K. A., Kulakoğlu, F., Yazgan, E., Kontani, R. Lehner, J. W., Dardeniz, G., Öztürk, G., Johnson, M., Hacı, A. <i>Antiquity</i> .
Gülşah Günata	Ph.D. 3, ARHA	First Observations on the Black Glazed Pottery at Claros	Maison de l'Orient et de la Mediterranee (2014)
Gülşah Günata	Ph.D. 3, ARHA	Troya: Protogeometrik, Geometrik ve Arkaik Dönemler (Co-author with Carolyn C. Aslan)	OLBA (2014)
Hatice Melis Yavuz-Müren	PH.D. 3, PSYC	Social competence and temperament in children with chronic orthopedic disability.	Yagmurlu, B., & Yavuz, H. M. (in press) <i>International Journal of Disability, Development and Education</i> .
Hatice Melis Yavuz-Müren	PH.D. 4, PSYC	Professionals' and mothers' beliefs about maternal sensitivity across cultures: Toward effective interventions in the multicultural society.	Ekmekci, H., Yavuz, M., Emmen, R., Mesman, J., Van IJendoorn, M., Yagmurlu, B., & Malda, M. (in press). <i>Journal of Child and Family Studies</i> . doi:10.1007/s10826-014-9937-0
Hatice Melis Yavuz-Müren	PH.D. 4, PSYC	Cognitive representation ability, communication skills, and social competence in children with autism. Focus on Autism and Other Developmental Disorders.	Yavuz, H. M., Yagmurlu, B., & Korkmaz, B. (under review).
Hatice Melis Yavuz-Müren	PH.D. 4, PSYC	Well-being of mothers of children with orthopedic disabilities in a disadvantaged context: Findings from Turkey.	Yagmurlu, B., Yavuz, H. M., & Sen, H. (2014). <i>Journal of Child and Family Studies</i> .
Hatice Melis	PH.D. 4, PSYC	Turkish mothers' coping with children's negative	Altan-Aytun, Ö., Yagmurlu, B., & Yavuz, M.

Yavuz-Müren		emotions: A brief report.	Journal of Child and Family Studies, 22, 437-443
Hilal Şen-Harma	Ph.D. 3, PSYC	Parenting: The Turkish context	Sen, H., Yavuz-Müren, M., & Yagmurlu In. H. Selin (Ed.), Parenting across cultures: Childrearing, motherhood and fatherhood in non-western cultures. Science across Cultures: The History of Non-Western Science. vol 7. (pp. 175-192). Netherlands: Springer.
Hilal Şen-Harma	Ph.D. 3, PSYC	Well-being, stress, and support in mothers of children with chronic orthopedic disability: Findings from a predominantly disadvantaged Turkish sample	Journal of Child and Family Studies
Kadir Aydın Gündüz	Ph.D.-4, INTL	Türkiye'deki Cumhuriyetçi ve İslami Kadın Sivil Toplum Örgütlerinin Sosyal Adalet Görüşlerinin Teorik Analizi: Farklı talepler ve rakip gelenekler	"Genç Araştırmacılar Tartışıyor", Ed. Şule Kut, Hasret Dikici Bilgin, Zeynep Alemdar, Umut Azak, Okan Üniversitesi Yayınları, 2014.
Kerem Yıldırım	PH.D. 3, INTL	Political Efficacy	The International Encyclopedia of Political Communication, ed.by., Gianpetro Mazzoleni and Ken'ichi Ikeda. Wiley-Blackwell.
Kerem Yıldırım	PH.D. 3, INTL	Characteristics of Prolonged Social Movements: The Case of Gezi Park Protests	in Contentious Politics in the Middle East, ed.by., Fawaz Gerges (with Birce Altıok).
Kerem Yıldırım	PH.D. 3, INTL	Press-Party Parallelism and Polarization of News Media during an Election Campaign: The Case of the 2011 Turkish Elections	The International Journal of Press/Politics,(with Ali Çarkoğlu & Lemi Baruh).
Mustafa Kutlay	Ph.D. 4; INTL	Rising Powers in a Changing Global Order: Political Economy of Turkey in the Age of BRICS	Third World Quarterly, 34 (8): 1408-14025 (with Ziya Öniş)
Mustafa Kutlay	Ph.D. 4, INTL	Uluslararası Politik Ekonomi	İçinde: Uluslararası İlişkilere Giriş, Şaban Kardas, Ali Balcı (editör), İstanbul: Küre Yayınları, 2014 (Ziya Öniş ile birlikte)
Mustafa Kutlay	Ph.D. 4, INTL	Euro Krizinin Politik Ekonomisi ve AB'nin Uluslararası Sistemdeki Geleceği	İçinde: Ülke Deneyimleri Işığında Küresel Kriz ve Yeni Ekonomik Düzen (İstanbul: İletişim Yayınları, 2013)
Pınar Çevikayak Yelmi	PH.D. 2, DTES	Istanbul's Sound Museum	International Journal of Heritage and Sustainable Development Vol 4 (1) <i>forthcoming 2014</i>
Süleyman Sabri Taşçı	Ph.D. 2, PSYC	Taşçı, S. S. (2013). Hand reversal and assimilation in TİD lexicalized fingerspelling.	In E. Arik (Ed.), Current directions in Turkish Sign Language research (pp.71-100). Newcastle upon Tyne, UK: Cambridge Scholars Publishing.
Sabiha Göloğlu	Ph.D. 3, ARHA	Mimarlık'ta Postmodern Kuram ve Uygulama	Mimarlık Dergisi 376 (2014): 37-41
Sabiha Göloğlu	Ph.D. 3, ARHA	Analyzing the Mimarlık Journal: Post-Modern Theory and Practice In Turkey	Proceedings of the Society of Architectural Historians, Australia and New Zealand: 30, Open, eds.Alexandra Brown and Andrew Leach (Gold Coast, Qld: SAHANZ, 2013),17-27.
Yasemin Özarlan	Ph.D. 3, ARHA	Chapter 2. The Fortified Structure A. In G. D. Summers, <i>Kerkenes Final Reports 2: Excavations at the Palace Complex</i>	Summers, G. D., Summers, F. and Y. Özarlan. <i>forthcoming</i> . Chicago: Oriental Institute Press.
Gizem Gündüz	MA 2, PSYC	Master Thesis	Under Minor Revisions. Early Education and Development Magazine , Routledge Press

Student Name	Department	Title	Conference	Title
PH.D. 3 PSYC	A. Burçin Erarlan Başkurt	Jul 8-Jul 13 2014	28th International Congress on Applied Psychology, Paris, France	"Fear of Leadership": Measurement and Conceptualization (with Ayca, Z., Bıçaker, E., Özkuvancı, C., Yürekli, Ö., Yaman, E.)
PH.D. 3 PSYC	A. Burçin Erarlan Başkurt	Jun 29-Jul 2 2014	International Society for the Study of Work & Organizational Values Conference, Riga, Latvia	Fear of Success and Attributions Made for Leaders (with Ayca, Z., Bıçaker, E., Özkuvancı, C., Yürekli, Ö., Yaman, E.)
PH.D. 3 PSYC	A. Burçin Erarlan Başkurt	Jun 18-Jun 22 2014	International Association for Chinese Management Research Conference, Beijing, China	A Yin Yang Perspective on Culture: Case Studies in National and Organizational Contexts
PH.D. 3 PSYC	A. Burçin Erarlan Başkurt	Apr 9-Apr 12 2014	18. Ulusal Psikoloji Kongresi / 18th National Psychology Congress, Bursa, Turkey	Liderlik Kaygısı: Kavramsallaştırma ve Ölçüm / Fear of Leadership:

				Conceptualization and Measurement (with Aycan, Z., Bıçaker, E., Özkuvancı, C., Yürekli, Ö., Yaman, E.)
PH.D. 3 PSYC	A. Burçin Erarslan Başkurt	Nov 1 2013	Koç Üniversitesi Toplumsal Cinsiyet ve Kadın Çalışmaları Araştırma ve Uygulama Merkezi (KOÇKAM) Araştırma Ödülleri Sempozyumu: Kadın ve Toplumsal Cinsiyet Çalışmaları / KOÇKAM Research Awards Symposium, Istanbul, Turkey	Türkiye’de Kadın ve Erkek Girişimcilerin Başarı Tanımları ve Kritik Başarı Faktörleri / Success Definitions and Key Success Factors of Men and Women Entrepreneurs in Turkey (with Aycan, Z., Erdoğan, I., Kabasakal, H., Varnalı, R.)
Ph.D. 1 INTL	Agnese Lace	28 March 2014	Symposium "Citizens, Places, Identities", University of South Florida	Shared Citizens across Stronger Borders: State Justifications for Application of Dual Citizenship
Ph.D. 4 PSYC	Arzu Aydınli	3-6 Sept 2013	ECDP, Lausanne	Aydınli, A., Dimitrova, R., Chasiotis, A., Bender, M., & van de Vijver, A.J.R. (2013). Ethnic identity and maintenance enhance well-being of Turkish-Bulgarian and Turkish-German adolescents. Poster presented at the 16th European Conference of Developmental Psychology (ECDP), Lausanne, Switzerland.
Ph.D. 4 PSYC	Arzu Aydınli	30. Aug - 1. Sept 2013	Mess workshop, Den Haag	Aydınli, A., Bender, M., Chasiotis, A., van de Vijver, A. J. R., & Cemalcılar, Z. (2013). Ingroup vs. out-group helping across different cultural groups in the Netherlands: Are immigrants more willing to help out-group members? Paper presented at the 7th MESS Workshop, Den Haag, the Netherlands.
MA 3 CSHS	Ayça Alaylı	14-16 June 2014	Educational Deveelopment in a Changing World	Sözer, M., Zeybekoğlu, Z., & Alaylı, A., (2014, Haziran). The Effect of Effective Teaching Training on Graduate Teaching Assistant’s Self Efficacy. [Etkili Öğretim Eğitimlerinin Öğretim Asistanlarının Öz Etkinliklerine Etkisi]. Sözlü bildiri Educational Development In a Changing World, Stockholm, İsveç.
MA 3 CSHS	Ayça Alaylı	9-12 April 2014	18. Ulusal Psikoloji Kongresi Bursa	Alaylı, A., & Yağmurlu, B. (2014, Nisan). İşitme Engelli Türk Çocuklarda Zihin Kuramı Gelişim Aşamaları. Poster 18. Ulusal Psikoloji Kongresi, Bursa, Türkiye.
MA 3 CSHS	Ayça Alaylı	9-12 Nisan 2014	18. Ulusal Psikoloji Kongresi Bursa	Yağmurlu, B., Harma, M., Etel, E., Sandıkçı, Y., Korucu, İ., Gündüz, G., & Alaylı, A. (2014, Nisan). Yetiştirme Kurumlarında Büyüyen Çocukların Davranış Problemlerinde Zihin Kuramı ve Yönetici İşlevlerin Rolü: Boylamsal Bir İnceleme. Sözlü Bildiri 18. Ulusal Psikoloji Kongresi, Bursa, Türkiye.
MA 3 CSHS	Ayça Alaylı	3-7 Eylül 2013	European Conference on Developmental Psychology (ECDP)	Harma, M., Yagmurlu, B., Alayli, A., Sandikci, Y., Korucu, İ., & Sen, H. (2013, Eylül). Behavior Problems, Executive Function, and Theory of Mind In Institution-Reared Turkish Children: A Two-Wave Panel Analysis. [Kurumlarda büyüyen çocuklarda davranış problemleri, yönetici işlevler ve zihin kuramı: iki dalga panel analizi]. Sözlü sunum 2013. European Conference on Developmental Psychology (ECDP), Lozan, İsveç.
Ph.D. 3 PSYC	Ayşe Beyza Ateş Şen	October 25-26, 2013	the L’Acquisition des Expressions Référentielles: Perspectives Croisées (AEREF)	Referential Forms in Conversational Discourse of Turkish Learners and Caregivers. (poster presentation)
Ph.D. 3 PSYC	Ayşe Beyza Ateş Şen	April 9-12, 2014	18th Annual Psychology Congress.	Çocukların Nesnelere Hakkında İletişimi: Pragmatik Prensiplerin Jest Kullanımıyla Etkileşimi. (poster presentation)

Ph.D. 3 PSYC	Ayşe Beyza Ateş Şen	April 20, 2014	1st International Symposium on Brain and Cognitive Science (ISBCS)	When Referential Cues are Contradictory: Young Children's Reliance on Ostensively Cued Pointing vs. Lexical Labels (poster presentation)
Ph.D. 3 PSYC	Ayşe Beyza Ateş Şen	July 3-5, 2014	19th Biennial International Conference on Infant Studies. Berlin, Germany.	How do Turkish learners and Their Caregivers Integrate Discourse-pragmatic Knowledge and Gestures in Their Referential Expressions? (poster presentation)
Ph.D. 3 PSYC	Ayşe Beyza Ateş Şen	July 14-18, 2014	the 13th International Congress for the Study of Child Language	Speech-gesture integration in caregivers' interactions with first-language learners in Turkey: Naturalistic and lab-based observations. (paper presentation)
Ph.D. 5 INTL	Ayşen Üstübici	November, 1 2013	1. KOÇ-KAM Araştırma Ödülleri Sempozyumu,, Koç University, Istanbul	"'Düzensiz' Göçün Cinsiyeti: Fas ve Türkiye'de Uluslararası Göç Politikalarının ve Göçmenlerin Deneyimlerinin Karşılaştırılması"
Ph.D. 5 INTL	Ayşen Üstübici	May 22-24 2014	Moroccan Migrations: Transformations, Transitions and Future Prospects, Fez, Morocco	"Mobilization for the Rights of "Sans-Papiers": Political Incorporation of Irregular Migrants in Morocco"
Ph.D. 5 INTL	Ayşen Üstübici	March 7-8 2014	Les Recherches sur les Migration au Maroc a la lumiere des Nouvelle Mutations. Bilan, innovations et perspectives Universite Mohammed V, Rabat, Maroc.	"Le gouvernance de la migration irrégulière dans la périphérie de l'Europe: une analyse comparative de la Turquie et du Maroc"
Ph.D. 5 INTL	Ayşen Üstübici	December, 28 2013	Dicle Koğacioğlu Öğrenci Konferansı ve Ödül Töreni 2013, Sabancı Üniversitesi, Istanbul	"Düzensiz göçün cinsiyet halleri: Riskler, Entegrasyon(?), Yasal Statü ve Korumaya Erişim"
MA 2 CSHS	Başak Gemici	May 6-8, 2014	5th Global Conference on Experiencing Prison, Lisbon/Portugal	Dynamics of Collective Action in Diyarbakir Prison between 1980-84
Ph.D. 4 PSYC	Berivan ECE USTA	18-19 June 2014	Comparative Perspectives on Autobiographical Memory: What Human and Non-human Animals Remember About Their Past Conference 2014	Ece, B. & Gulgoz, S. (2014, June). Memory for Repeated Events: Memories of Dancers for Competitions and Shows
Ph.D. 4 PSYC	Berivan ECE USTA	22-25 May 2014	Association for Psychological Science 26TH Annual Convention	Ece, B. & Gulgoz, S. (2014, May). Reminiscence bump is a function of life scripts
Ph.D. 4 PSYC	Berivan ECE USTA	April 2014	18th National Congress of Psychology	Ece-Usta, B. & Gulgoz, S. (2014, April). Autobiographical Memory for Repeated Events
Ph.D. 4 PSYC	Berivan ECE USTA	April 2014	18th National Congress of Psychology	Ece-Usta, B. & Gulgoz, S. (2014, April). Effect of Typical Life Script Events on the Reminiscence Bump
Ph.D. 4 PSYC	Berivan ECE USTA	November 2013	The 54th Psychonomic Society Annual Meeting	Ece-Usta, B., Gulgoz, S., Oner, S., Ayturk, E., & Semin, G. R. (2013, November). Ambient odor affects what and how we remember
Ph.D. 4 PSYC	Berivan ECE USTA	June 2013	23rd Congress of Society for Applied Research in Memory and Cognition	Gulgoz, S., Ece-Usta, B., Oner, S., Ayturk, E., & Semin, G. R. (2013, June). Ambient odor and autobiographical memory
PSYC	Berivan Ece Usta, Sezin Öner, Ezgi Aytürk	14-17 November 2013	14th annual conference of Psychonomic Society, Toronto, Ontario, Canada.	Ambient Odor Affects What and How We Remember.
Ph.D. 4 PSYC	Berna Akçınar	3-5 April 2014	SRCD Special Topic Meeting - Strengthening Connections Among Child and Family Research, Policy and Practice	Poster presented
Ph.D. 4 PSYC	Berna Akçınar	15-19 July 2014	21st World Meeting of the International Society for Research on Aggression	Paper presentation
Ph.D. 1 PSYC	Berna Arslan Uzundağ	November 2013	Psychonomics	Cultural differences in flanker task interference with Millar, P., Uzundag B., Gutches, A., Boduroglu, A., & Sekuler, R.

Ph.D. 1 PSYC	Berna Arslan Uzundağ	March 2014	CUNY Sentence Processing Conference	Turkish-speaking children use verbal morphemes to predict argument structure with Ozge, D., Snedeker, J., Ozkan-Gokturk, D., Uzundag, B., & Kuntay, A.
Ph.D. 1 PSYC	Berna Arslan Uzundağ	April 2014	International Symposium on Brain and Cognitive Science	The role of event segmentation in narrative recall with Uzundag, B., Boduroglu, A., Tekin, E. E., & Kuntay, A. C.
MA 2 ARHA	Beyza Uzun	3-5 April 2014	Workshop: "Empires of the Eye: Ottoman Material Culture and Its Place in Birmingham," organized by the University of Birmingham and the Birmingham Museums Trust	Co-authored with Nina Ergin and co-presented the paper "Scenting the Imperial Residence: Objects from the Topkapı Palace Museum Collections"
MA 1 DTES	Bilge Merve Aktaş	14-16 May, 2014	Anadolu ISAE - International Symposium of Arts Education, Eskişehir Anadolu University	Paper Presentation: Creative Thinking via Crafts in Turkey: Traditional Sock-making in 21st Century, with Ilgim Ververi Alaca
MA 1 DTES	Bilge Merve Aktaş	8-10 May, 2014	Cumulus Aveiro 2014 Conference, Portugal	Poster Presentation: Informal Partnership, with Ilgim Ververi Alaca
PH.D. 4 PSYC	Celia K. Naivar Şen	13-15 February 2014	15th Annual Meeting of the Society for Personality and Social Psychology (Austin, TX, USA)	Individual Differences in Mammogram Compliance: A Decision Tree Approach
Ph.D. 3 INTL	Birce Altıok	September, 2013	London School of Economics, Middle East Center Ph.D. Conference on Contentious Politics in the Middle East, London	"Characteristics of Prolonged Social Movements: the Case of Gezi Park Protests" co-author Kerem Yıldırım
PH.D. 4 PSYC	Celia K. Naivar Şen	7-9 March 2014	III. Ulusal Sağlık Bakimiyla İlişkili İnfeksiyonlar Simpozyumu (Istanbul)	El Hijyeni Uyumunun Artırılması
PH.D. 4 PSYC	Celia K. Naivar Şen	26-30 August 2014	28th Conference of the European Health Psychology Society (Innsbruck, Austria)	Setting the Record Straight: Homosexual Tendencies in Organ Donor Registration
MA 2 INTL	Ceren Çoban	17 April 2013	Graduate Student Symposium on Migration Research, Ege University, Izmir, Turkey	Development and Internal Migration in Turkey
MA2 PSYC	Ceyda Özkuvancı	9-12 April 2014	18. Ulusal Psikoloji Kongresi, Bursa	Aycan, Z., Başkurt-Erarslan, B., Özkuvancı, C., Sandal, C., Yaman, E., Yürekli, Ö. Poster Presentation: "Fear of Leadership": Measurement and Conceptualization
MA2 PSYC	Ceyda Özkuvancı	29 June-2 July 2014	ISSWOV Riga, 2014	Aycan, Z., Başkurt-Erarslan, B., Özkuvancı, C., Sandal, Yürekli, Ö. Oral Presentation: The Relation between Fear of Success, Respondent-Hypothetical Leader Gender and Negative Attributions Made for Successful Leaders
MA2 PSYC	Ceyda Özkuvancı	8-12 July 2014	ICAP Paris, 2014	Aycan, Z., Başkurt-Erarslan, B., Özkuvancı, C., Sandal, C., Yaman, E., Yürekli, Ö. Poster Presentation: "Fear of Leadership": Measurement and Conceptualization
Ph.D. 2 PSYC	Ceyla Erhan	May 2014	26th APS Annual Convention	Relatedness but not Autonomy is Associated with Decreased Suicidal Ideation (Beckmann, H. Erhan, C., Dora, B. & Çankaya, B.)-poster
Ph.D. 2 PSYC	Ceyla Erhan	April 2014	National Psychology Conference, Bursa	Relationship between Depression and Suicidality with Sense of Belongingness and Collectivism-Individualism (in Turkish)(Beckmann, H., Erhan, C., Dora, B., Kitis, S., Öztürk, E. & Çankaya, B.)-poster
Ph.D. 1 DTES	Damla Çay	June 25-28, 2014	Computer Assisted Radiology 28th International Congress and Exhibition, Japan	Asım Evren Yantaç, Damla Çay, Duygun Erol Barkana. Paper Presentation: Exploring Design Criteria for Graphical User Interface of a Surgical Operation Robot
Ph.D. 1 DTES	Damla Çay	15-17 July, 2014	8th International Conference on Interfaces and Human Computer Interaction	Asım Evren Yantaç, Damla Çay, Gokhan Akgun, Duygun Erol Barkana. Paper Presentation: Insights from User Studies for the Graphical User Interface Design of a Surgical Operation Robot
MA 2 PSYC	Demet Kara	15-18July 2014	36th Annual Conference of International School Psychology Association (ISPA)	Role of Parenting and Self-Types on Self and Emotion Regulation
Ph.D. 5 INTL	Didem Çakmaklı	9 November 2013	11th Graduate Conference of the Turkish Political Science Association, Middle East Technical University, Ankara, Turkey	Participation in Civil Society Organizaitons and Active Citizenship in Turkey

Ph.D. 5 INTL	Didem Çakmaklı	26-29 March 2014	International Studies Association 55th Annual Convention, Toronto, Canada	Learning Citizenship: A Comparative Study of Participation in Civil Society Organizations in Turkey
MA 2 INTL	Didem Seyis	6 - 9 August 2014	WISC-ISA Joint International Conference: Justice, Peace and Stability: Risks and Opportunities for Governance and Development, held in Goethe University, Frankfurt	A Comparative Study of Ideal Citizenry Depictions in Turkish Primary School Curriculum: Before and After JDP Government
MA 2 INTL	Didem Seyis	6 - 9 August 2014	WISC-ISA Joint International Conference: Justice, Peace and Stability: Risks and Opportunities for Governance and Development, held in Goethe University, Frankfurt	The Perception of Syrian "Visitors" In Turkey
MA 2 INTL	Didem Seyis	31 March - 3 April 2014	International Journal of Arts & Sciences, Paris (Accepted)	A Comparative Study of Ideal Citizenry Depictions in Turkish Primary School Curriculum: Before and After JDP Government
MA 2 INTL	Didem Seyis	21 - 24 May 2014	2nd European Workshops in International Studies, Gediz University, Izmir (Accepted)	The Perception of Syrian "Visitors" In Turkey
Ph.D. 3 PSYC	Eda Mızrak	2013	54th annual meeting of Psychonomic Society, Toronto, Canada	Mızrak, E. & Öztekin, I. Poster Presentation on Impact of Emotion on Interference Resolution In Working Memory
Ph.D. 1 DTES	Elif Baykal	8 March, 2014	Mixer Art Gallery / Career Development Seminars for Artists	Interdisciplinary Art Education: International Generations, with Ilgım Veyerli Alaca
Ph.D. 1 DTES	Elif Baykal	3 May, 2014	Education Reform Initiative / 11. Eğitimde İyi Örnekler Konferansı (IOK 2014)	Children's Picture Books: Creative Reading Practices for Preschool Children, with Ilgım Veyerli Alaca
Ph.D. 2 ARHA	Emily Arauz	5-7 September 2013	Critical Legal Conference	Creative Resistance: Artistic Reactions Against Recent Urban Developments in Istanbul and Gezi Park
PH.D. 2 ARHA	Emily Arauz	28 March 2014	Citizenship, 'claims' to the city, heritage and urban developments - A Graduate Symposium	Divided Cities and Contested Spaces: Conflict and Negotiation in Contemporary Urban Spaces
Ph.D. 2 ARHA	Emily Arauz	10-14 September 2014	European Association of Archaeologists 20th Annual Meeting	Managing Alalakh: Negotiating Cultural Heritage Practices at an Archaeological Site in Hatay
MA 2 PSYC	Ezgi Aytürk	14-17 November 2013	14th annual conference of Psychonomic Society, Toronto, Ontario, Canada.	The Effect of Remembering Success or Failure Memories on Self-Efficacy: The Role of Memory Perspective.
MA 2 PSYC	Ezgi Aytürk	9-12 April 2014	18th National Congress of Psychology, Bursa, Turkey.	Memory Processes for Regret-evoking Events in Comparison With Contentment-evoking Events.
Ph.D. 2 ARHA	Fatma Coşkuner	06 - 07 June	Türkiye Polonya İlişkilerinde Temas Alanları (1414-2014) Sempozyumu - Varşova	Empire and Artistic Connections: Sultan Abdülaziz and His Court Painter Stanislaw Chelebowski
Ph.D. 4 INTL	Gitta Glöpker-Kesebir	7-9 September 2013	General Conference of the European Consortium for Political Research (ECPR) in Bordeaux,	Prented a Paper on "Effects of the Economic Crisis on Public Support for EU Membership in Croatia, Macedonia and Turkey" co-authored with Ali Çarkoğlu
Ph.D. 2 ARHA	Gizem Dörter	5-7 Sept. 2013	Critical Legal Conference 2013 "Reconciliation and Reconstruction" (in Queen's University, Belfast, UK)	Contested Urban Public Spaces: Cultural Heritage in the Case of Taksim Square
Ph.D. 2 ARHA	Gizem Dörter	28 Oct. – 1 Nov. 2013	Digital Heritage International Congress 2013 (in Marseilles, France)	Bringing Geographical Information Systems into the Museum World (co-authored with Lauren Davis)
Ph.D. 2 ARHA	Gizem Dörter	28 Nov. 2013	Invited as guest lecturer at Istanbul Technical University, graduate course on The Legal, Financial and Social Frameworks of Conservation Projects	"International Funding and Planning for Cultural Heritage Projects"
MA 2 PSYC	Gizem Gündüz	Nisan 2014	18th National Congress of Psychology, Bursa, Turkey	Annenin depresif duygudurumundan çocuğun sosyo-duygusal yetkinliğine giden uzun yoldaki önemli aracı: Öz-düzenleme. Gündüz, G., Yağmurlu, B., & Harma, M.
MA 2 PSYC	Gizem Gündüz	Nisan 2014	18th National Congress of Psychology, Bursa, Turkey	Yetiştirme Kurumlarında Büyüyen Çocukların Davranış Problemlerinde Zihin Kuramı ve Yönetici İşlevlerin Rolü: Boylamsal Bir İnceleme Yağmurlu, B.,

				Harma, M., Etel, E., Sandıkçı, Y., Korucu, İ., Gündüz, G., & Alaylı, A.
MA 2 PSYC	Gizem Gündüz	Nisan 2014	18th National Congress of Psychology, Bursa, Turkey	Yetiştirme Kurumlarında Büyüyen Çocukların Davranış Problemlerinde Zihin Kuramı ve Yönetici İşlevlerin Rolü: Boylamsal Bir İnceleme Yağmurlu, B., Harma, M., Etel, E., Sandıkçı, Y., Korucu, İ., Gündüz, G., & Alaylı, A.
MA 2 PSYC	Gizem Gündüz İrem Korucu Yasemin Sandıkçı	2013	Family and social Policies Ministry	Yetiştirme yurdunda yaşayan okul öncesi dönemdeki çocukların gelişimine dair bir inceleme. Report presented with Yağmurlu, B., Harma
Ph.D. 2 ARHA	Gonca Dardeniz	May 2014	Science Colloquium Series, University Colloge London	A new Late Bronze Age production debris: Vitriified material crafting in the second millennium BC Tell Atchana-ancient Alalakh
Ph.D. 2 ARHA	Gonca Dardeniz	May 2013	29th Archaeometry Symposium, Ministry of Culture and Tourism, Muğla	Alalakh (Tell Atchana Höyük): Geç Tunç Çağı'nda Cam Üretimine Ait Yeni Bulgular [Alalakh/ Tell Atchana: New Results of the Late Bronze Age Glass Production
Ph.D. 2 ARHA	Gonca Dardeniz	June 2014 (I will be presenting)	30th Archaeometry Symposium, Ministry of Culture and Tourism, Gaziantep	Cam üretmek ve/veya Cam işlemek: Anadolu'da Geç Tunç Çağı verilerinin bilimsel ve arkeolojik olarak gözden geçirilmesi [Glassmaking and/or glassworking: Revisiting scientific and archaeological evidence from the Late Bronze Age Anatolia]
Ph.D. 2 ARHA	Gonca Dardeniz	September 2014 (I will be presenting)	20th European Assosiation of Archaeologist Annual Meeting	Conceptualising Glassmaking and Glassworking in the Late Bronze Age Tell Atchana/ancient Alalakh
Ph.D. 2 ARHA	Gülşah Günata	September 2014 (I will be presenting)	20th European Assosiation of Archaeologist Annual Meeting	Claros: an Extraurban Sanctuary
Ph.D. 2 PSYC	Hakan Karşılar	31 March - 3 April 2014	International Conference on Timing and Time Perception, Corfu/Greece	Speed-Accuracy Trade-off Under Response Deadlines (Poster)
Ph.D. 2 PSYC	Hakan Karşılar	9 - 12 April 2014	18. Ulusal Psikoloji Kongresi, Bursa/Türkiye	Tepki Süresi Sınırlandırması Altında Hız-Doğruluk Ödünleşmesi (Poster)
MA 2 CSHS	Hande Güzel	11 September 2013	Behind the Lines: Gender in the Bunker of International Security and Defence?	On the Verge: Military, Nation, Disability and Masculinity
MA 2 CSHS	Hande Güzel	13 June 2014	Pace, Penalty and Pirouette: The Sociology of Physical Culture	Educating the Body: Sociology of Physical Education in Turkey (1969-1983)
MA 2 PSYC	Hannah Beckmann	May 22-25 2014	DEPRESYON VE İNTİHAR EĞİLİMİNİN AİDİYET DUYGUSU VE TOPLULUKÇULUK/BİREYCİLİK İLE İLİŞKİSİ	Poster presented on the 18. ulusal psikoloji kongresi, Bursa, 9.-12.4.2014
MA 2 PSYC	Hannah Beckmann	May 22-25 2014	Relatedness but not Autonomy is Associated with Decreased Suicidal Ideation	Poster presented on the 26th APS Annual Convention, San Francisco, May 22-25, 2014
PH.D. 3 PSYC	Hatice Melis Yavuz-Müren	8-12 July 2014	The 23rd Biennial Meeting of the International Society for the Study of Behavioural Development (ISSBD) Early Career Scholars Travel Award	Yavuz, H. M., Sen, H., & Yagmurlu, B. (2014, July). Positive and negative control behaviors of Turkish mothers: Links with well-being and children's social-emotional outcomes. Symposium paper to be presented at the International Society for Research in Child Development, Shanghai, China.
PH.D.3 PSYC	Hatice Melis Yavuz-Müren	9-12 April 2014	18. Ulusal Psikoloji Kongresi	Yavuz, H. M., Sen, H., & Yagmurlu, B. (2014, April). Olumlu ve olumsuz kontrol davranışları: Annenin esenliği ve çocuğun sosyo-duygusal gelişimi ile ilişkisi. Poster presented at the National Congress of Psychology, Bursa, Turkey.
Ph.D.-3 PSYC	Hilal Şen Harma	08-12 July 2014	Biennial Meeting of International Society for the Study of Behavioural Development	Positive and negative control behaviors of Turkish mothers: Links with well-being and children's emotional outcomes
Ph.D.-3 PSYC	Hilal Şen Harma	09-12 April 2014	National Congress of Psychology	Positive and negative control behaviors: Associations with maternal well-being and child socio-emotional development
Ph.D. 5 INTL	İmren Borsuk	30 May-1 June 2014	Turkish Migration Conference: Comparative Perspectives and Continuities, Regent's	Lynching against Kurds (1999-2012),

			University, London	
Ph.D. 5	İmren Borsuk	12-13 September 2013	Centre for the Studies of Ethnic Conflict, Belfast, Queen`s University of Belfast.	Interethnic Peace During Ethnic Insurgency: Kurdish Problem in Turkey, Perspectives on Transitions: Inter-Communal Conflict and Paths to Democratisation
MA 2	İrem Korucu	Nisan 2014	18th National Congress of Psychology, Bursa, Turkey	Yetiştirme Kurumlarında Büyüyen Çocukların Davranış Problemlerinde Zihin Kuramı ve Yönetici İşlevlerin Rolü: Boylamsal Bir İnceleme Yağmurlu, B., Harma, M., Etel, E., Sandıkçı, Y., Korucu, İ., Gündüz, G., & Alaylı, A. Symposium paper presented with Yağmurlu, B., Harma, M., Etel, E., Sandıkçı, Y., Korucu, İ., Gündüz, G., & Alaylı, A.
PH.D. 3	Kerem Yıldırım	June 2013	Annual Meeting of the International Association of Media and Communication Researchers.	Echo Chambers in Election Coverage: Campaign Advertisements, Newspapers` Readership Base, and Press-Party Parallelism in Turkey. (With Lemi Baruh and Ali Çarkoğlu)
PH.D. 3	Kerem Yıldırım	September 2013	General Conference of the European Consortium for Political Research.	Post-Arab Spring Elections: A Comparison of VAA Results. (With Ali Çarkoğlu and Andre Krouwel)
PH.D. 3	Kerem Yıldırım	September 2014	LSE Middle East Centre Ph.D. Conference	Characteristics of Prolonged Social Movements: the Case of Gezi Park Protests. (With Birce Altıok)
Ph.D. 3	Lauren Davis	1 - 4 October 2013	XXXIII International Symposium on Conservation of Cultural Heritage, ICICH - ICOMOS Mexico, Coatepec, Mexico	"Scent and the City: Exploring, Documenting, and Preserving the intangible Heritage of Smell in the Spice Market Quarter of Istanbul" co-authored with Lucienne Thys-Şenocak
Ph.D. 3	Lauren Davis	28 Oct. – 1 Nov. 2013	Digital Heritage Congress 2013, Marseilles, France	"Bringing Geographical Information Systems into the Museum World" co-authored with Gizem Dörter
Ph.D. 3	Lauren Davis	1 - 4 December 2013	NODEM 2013 Beyond Control – The Collaborative Museum and its Challenges, Stockholm, Sweden	"Working in beta – implications for museums and their visitors" co-authored with Merel van der Vaart and Christie Ray
MA 2	Maria Kramer	9-11 April 2014	Medical Selection Examinations during the Recruitment of work-related Migrants in Europe between 1950 and 1990	The Construction of the Labour Migrant's Body: West Germany's Recruitment of Turkish Labour between 1961 and 1973
MA 2	Maria Kramer	7-9 September 2014	3rd Global Conference - Time, Space and the Body	The Construction of the Labour Migrant's Body: Federal Germany's Medical Selection of Turkish Labour Migrants (1961-1973)
Ph.D. 4	Mustafa Kutlay	4-7 March 2014	The State in the Balkans, Balkans Futures Workshop, British School at Athens, Greece	"Shifting Boundaries of State-Market Relations in Turkey in the Age of BRICS: Limits of Regional Power Influence"
PH.D. 1	Müge Bulu	25-26 October 2013	Places and Spaces in Hittite Anatolia I: Hatti and the East. Istanbul University, Turkey	A New Look at the Periphery of the Hittite Empire: Re-evaluating 2nd Millennium BC Settlement Patterns in the Amuq Valley in the Light of Ceramics
PH.D. 1	Müge Bulu	41762	Eating Anatolia: Remembered Histories and Forgotten Foods. Koç ARHA Graduate Symposium, Research Center for Anatolian Civilizations, Istanbul, Turkey	Cooking and Serving Practices at an Amorite Palace: An Intact Kitchen Context from Middle Bronze Age Alalakh
PH.D. 1	Müge Bulu	9-13 June 2014	9th International Congress on the Archaeology of the Ancient Near East (ICAANE). University of Basel, Switzerland	An Intact Palace Kitchen Context from Middle Bronze Age Alalakh: Its Organization and Function
PH.D. 1	Müge Bulu	10-14 September 2014	European Association of Archaeologists 20th Annual Meeting. Istanbul Technical University, Turkey	Cooking and Serving Practices at an Amorite Palace: An Intact Kitchen Context from Middle Bronze Age Alalakh
MA2	Nur Bulut, Naz Cuguoğlu, Cemre Sandal, Aylin Uzun	13-15 February 2014	15th Annual Meeting of The Society for Personality and Social Psychology	WHAT IS THE SECRET OF SECRETS: DO THEY INFLUENCE ACTIONS AND PERCEPTIONS?
	Oğuz Turhan Buruk,Ahmet Güzererler,	June 2013	2nd International Conference on Illustration and Animation.	"Anything Left to Borrow From Cinema? Guidelines for Game Narrative"

	Mehmet Aydın Baytaş, Barış Serim			
Ph.D. 5	Ömer Faruk Örsün	41579	2013 Peace Science (International) Annual Meeting, Knoxville, USA	Dangerous Democratization or Concept Misformation (with Reşat Bayer and Michael Bernhard)
MA 1	Özge Yıldız	May 9 2014	The Ottoman Empire in the Age of Modernity: Political and Cultural Representations, 2nd Graduate Workshop in Ottoman Studies, Ertegun House, University of Oxford	The Usul-i Mimari-i Osmani and Architectural Representations of Ottoman Identity in the Late Nineteenth Century
MA2	Özlem Yürekli	9-12 April 2014	18. Ulusal Psikoloji Kongresi / 18th National Psychology Congress, Bursa	"Liderlik Kaygısı: Kavramsallaştırma ve Ölçüm"
MA2	Özlem Yürekli	29 June-2 July 2014	International Society for the Study of Work & Organizational Values Conference, Riga	"Fear of Success and Attributions Made for Leaders"
MA2	Özlem Yürekli	8-13 July	28th International Congress of Applied Psychology, Paris	"Fear of Leadership: Conceptualization and Measurement"
PH.D. 2	Pınar Çevikayak Yelmi	24-26 July 2013	3rd International Conference on Intangible Heritage	Sound Museum of Istanbul
PH.D. 2	Pınar Çevikayak Yelmi	11-13 June 2014	9th International Conference on Interdisciplinary Social Disciplines	A Museum for Sounds: Designing a Space for the Sonic Cultural Heritage of Istanbul (poster)
Ph.D. 2	Seda Duygu Sever	4 March 2013	Azerbaijan Diplomatic Academy Ph.D. Colloquium	"European Energy Policy and Turkey's Energy Role: How the Accession Process will be Affected?"
Ph.D. 2	Sezin Öner	14-17 November 2013	54th Psychonomic Society Annual Meeting. Toronto, Canada.	Ambient odor affects what and how we remember.
Ph.D. 2	Sezin Öner	9-12 April 2014	18th National Congress of Psychology, Bursa, Turkey.	Otobiyografik Bellek İşlevselliğini Yakın İlişkiler Çerçevesinde Düşünmek
Ph.D. 2	Sezin Öner	22-25 May 2014	26th Annual Convention of Association for Psychological Science, San Francisco, USA	How you remember your relationship memories influences satisfaction
Ph.D. 2	Sezin Öner	22-25 May 2014	26th Annual Convention of Association for Psychological Science, San Francisco, USA	Love and Happiness: Towards a better understanding of the ultimate duo
Ph.D. 2	Süleyman Sabri Taşçı	20 January 2014	Landelijke Onderzoekschool Taalwetenschap (LOT) Winter School	Taşçı, Furman, Özyürek, Küntay. Turkish Caregivers' and Children's Speech and Gestures about Caused Motion Events reveal Language-Specific Development. [Poster Presentation]
Ph.D. 2	Süleyman Sabri Taşçı	12 April 2014	18. Ulusal Psikoloji Kongresi	Taşçı, Furman, Özyürek, Küntay. Çocuğa yöneltilen dilde hareket belirten ifadelerin iletişim gelişimine etkisi. [Poster Presentation]
Ph.D. 2	Süleyman Sabri Taşçı	16 July 2014	13th International Congress for the Study of Child Language.	Taşçı, Furman, Özyürek, Küntay. Influence of verb typology on the emergence of iconic gestures: Evidence from Turkish-speaking children and caregivers. [Symposium Presentation]
Ph.D. 1	Tim Dorlach	10-11 April 2014	2nd Spectrum Conference on Approaches and Issues in Critical International Political Economy, Middle East Technical University, Ankara, Turkey	Pharmaceutical Price Controls in Emerging Economies: The Case of Turkey
Ph.D. 1	Tim Dorlach	23-24 October 2013	5th International Conference of Political Economy (ICOPEC), Kocaeli University, Izmit, Turkey	The Political Economy of Pharmaceutical Prices: The Case of Turkey, 2002-2012
Ph.D. 1	Tim Dorlach	30 June-2 July 2014	3rd Annual Conference of the Sheffield Political Economy Research Institute (SPERI), University of Sheffield	Pharmaceutical Price Controls in Emerging Economies: The Case of Turkey
MA 2	Tyler Wolford	Feb 27 - March 1, 2014	2014 Mary Jaharis Center for Byzantine Art and Culture Graduate Student Conference on Byzantine Studies	The Infirmary and Space for the Ill in the Monasteries of Late Antiquity
Ph.D. 3	Yasemin Özarlan	10-14 September 2014	EAA Annual Meeting 2014, ITU Istanbul, TURKEY	Özarlan, Y., Turner, S. and M. Jackson. Karadağ: new perspectives on an historic landscape
MA 2	Yasemin Sandıkçı	May 2014	VI. Aile Şurası, Aile ve Sosyal Politikalar Bakanlığı, Ankara	Kurumda yetişmiş çocuklarda sosyal ve bilişsel gelişim .(Yağmurlu, B. & Harma, M. ile beraber)

AWARDS, GRANTS

➤ **Kerem Yıldırım, INTL Ph.D.**

Grant: Research Grant by Association for the Study of the Middle East and Africa (ASMEA)

Description: Research grant for fieldwork on dissertation topic, findings are to be presented in Washington DC General Conference on October, 2014

➤ **Arzu Aydınli, PSYC, Ph.D.**

Award: Recipient of the Jacobs Foundation fellowship of the best poster award by the Early Researchers Union 16th European Conference of Developmental Psychology (ECDP)

➤ **Ayşe Beyza Ateş Şen, PSYC Ph.D.**

Grant: Jacobs Foundation Travel Award (\$2000 US)

19. International Society on Infant Studies (ISIS)

➤ **Ayşe Beyza Ateş Şen, PSYC Ph.D.**

Grant: Travel Award (£400)

13th International Congress for the Study of Child Language

➤ **Ayşe Burçin Erarslan Baskurt, PSYC Ph.D.**

Grant: International Association for Chinese Management Research Student Grant

➤ **Ayşe Burçin Erarslan Baskurt, PSYC Ph.D.**

Grant: KOCKAM Project Conference Fund

➤ **Ayşen Üstübici , INTL Ph.D.**

Award: Third Prize, Sabancı University Gender and Women's Studies Forum, the Dicle Koğacıoğlu Article Awards

➤ **Ayşen Üstübici , INTL Ph.D.**

Grant: TUBITAK (The Scientific and Technological Research Council of Turkey) scholarship for Joint Doctorate with the University of Amsterdam

➤ **Berivan Ece Usta , PSYC Ph.D.**

Grant: Travel Assistance Award

Association for Psychological Science (APS)

➤ **Berivan Ece Usta , PSYC Ph.D.**

Grant: Student Travel Support Grant

Society of Applied Research in Memory and Cognition (SARMAC)

➤ **Betül Durmuş, Deniz Yıldız, Melike Yıldız , Public Law LLM**

Grant: Won the Raul Wallenberg Institute Research Grant of 7.000 TL

Details: will commence on a six month study entitled: "The Implementation of European Court of Human Rights Judgments regarding Women: The Turkish case"

➤ **Didem Çakmaklı , INTL Ph.D.**

Grant: TÜBİTAK Ph.D. funding under project entitled "Being an Active Citizen: Civil Society Organizations and Citizenship in Turkey"

➤ **Eda Mızrak , PSYC Ph.D.**

Award: Nominee for American Psychological Association Division 3 Early Career Poster Award, Psychonomic Society Annual Meeting, Toronto, CA

➤ **Gonca Dardeniz, ARHA Ph.D.**

Grant: AKMED (Research Institute on Mediterranean Civilizations) Research Grant

Details: For the isotopic research on Tell Atchana/ancient Alalakh vitrified material assemblage

➤ **Hakan Karşilar , PSYC Ph.D.**

Award: Best poster award

International Conference on Timing and Time Perception

➤ **Hakan Karşilar , PSYC Ph.D.**

Award: Won 1st Place in Poster Competition

18. Ulusal Psikoloji Kongresi, Bursa/Türkiye

➤ **Hannah Beckmann , PSYC MA**

Annual scholarship of the German Academic Exchange Service for graduate students

➤ **Hatice Melis Müren , PSYC Ph.D.**

Award: The 23rd Biennial Meeting of the International Society for the Study of Behavioural Development (ISSBD)

Early Career Scholars Travel Award

➤ **İmren Borsuk , INTL Ph.D.**

Grant: TUBITAK Research Fellowship Program Scholarship (September 2013-August 2014)

➤ **Müge Bulu , ARHA Ph.D.**

Grant: TÜBİTAK

Details: Grant from the Hittite Historical Atlas project to study the 2nd Millennium BC pottery of the Amuq Valley survey

➤ **Ömer Faruk Örsün , INTL Ph.D.**

Grant: TUBITAK Predoctoral Research Grant (# 2214)

➤ **Sezin Öner , PSYC Ph.D.**

Grant: Travel Grant

26th Annual Convention of Association for Psychological Science

Workshops, Seminars, Trainings, Internships

➤ **CEE – IRSEM Joint Doctoral Student Workshop and Doctoral Seminar, Paris**

The EU as a Global Actor [The Institut de Recherche Stratégique de l'Ecole Militaire (IRSEM - French Institute of Strategic Research), in partnership with the Centre d'études Européennes - Sciences Po (CEE)]

Birce Altıok, INTL Ph.D.

➤ **"Ani in Context" workshop organized by Norwegian Institute for Cultural Heritage Research, Kars**

September 2013

Gizem Dörter, ARHA PH.D.

➤ **International Funding and Planning for Cultural Heritage Projects**

Guest lecturer at Istanbul Technical University, graduate course on The Legal, Financial and Social Frameworks of Conservation Projects

Nov 2013

Gizem Dörter, ARHA PH.D.

Summer School/Internships and Extra Trainings

- **Internship at Allard Pierson Museum, Amsterdam, The Netherlands**
June-July 2013
Lauren Nicole Davis , ARHA Ph.D.
- **Internship at Smithsonian Institution, Freer Gallery of Art and Arthur M. Sackler Gallery, Washington D.C., United States of America**
September-December 2013
Lauren Nicole Davis , ARHA Ph.D.
- **Internship at the Allard Pierson Museum in Amsterdam, The Netherlands**
June-July 2013
Gizem Dörter , ARHA Ph.D.
- **Internship, Cornucopia Magazine, Istanbul Office**
June 2013- June 2014
Emily Arauz , ARHA Ph.D.
- **Internship The Museum of Modern Art, Department of Education, New York**
September 2013- September 2014
Berat Meryem Örnek, ARHA MA
- **Internship in the Numismatic Museum of Athens**
July 2014
Stephanos Dimitriadis, ARHA Ph.D.
- **Fellowship, Crivelli Europe fellowship for Ph.D, funded by UniCredit and Universities Foundation in the Numismatic Museum of Athens**
2014
This is an extremely competitive fellowship offered to only two students in Europe
Mert Demirer, ECON Ph.D.
- **LOT Winter School , Vrije University, Amsterdam**
January 2014
Winter school participation: Took 2 courses (Quantitative Corpus Linguistics and Electrophysiology of meaning construction)
Berna Arslan Uzundağ , PSYC Ph.D.
- **Intensive Ottoman Summer School, Ayvalık, Harvard University and Koç University, Ayvalık**
July – August 2014
Özge Yıldız , ARHA MA
Sabiha Göloğlu, ARHA Ph.D.
- **Special Training "psychological psychotherapy" German Society for Behavioral Therapy**
July 2014
Hannah Beckmann, PSYC MA

Research, Workshops and Projects

- Design, Technology and Society Graduate students are working on a game design in double-sided displays. They have developed an interactive environment concept called “DubTouch” where two players can touch each other for playing games. As part of their research, they have conducted a design workshop with participants from several expertise areas which are illustration, game design, interaction design, 3d modelling and sound design. This workshop resulted in two games designed for the DubTouch Environment.



- DTes Grad student participated as authors in the paper entitled "CHI 2039: Speculative research visions", a collection of future perspectives on emerging technologies. The paper was presented at altCHI, a section of the highly prestigious CHI conference, and is archived as a publication in ACM digital library. CHI conference is the top publication channel and the most prestigious conference for Human Computer Interaction with the h5-index of 78 according to the Google Scholar Metrics. alt.chi section of the conference has a %37,5 acceptance rate this year. Moreover, our abstract for the paper, succeeded to take its place among 15 submissions out of 33.
- Design Lab Graduate students developed **Hotspotizer**, an end-to-end Windows application that enables end-users without expertise in computer programming to author custom full-body gestures. Using Hotspotizer, anyone can use a Kinect sensor and gestural interaction to control any application on their computer. The software has been downloaded by number of users from the web.



Workshops Organized by DTeS

- Seyir Defteri 2, 11-12.04, Koç University Research Center for Anatolian Civilizations
- Journal / Seyir Defteri, 06.03.2014, SALT Galata
- Circulation Maps, 27.01.2014, Koç Üniversitesi
- Location and Time Maps, 07.12.2013, SALT Galata

Archeology Graduate Symposium



Eating Anatolia: Remembered Histories and Forgotten Foods

Organized by; ARHA MA and Ph.D. Students Emma Baser-Rose, Ayşe Bursalini, Suay Erkusoz, Alican Kutlay, Yasemin Ozarslan, and Jenna Shaw

The second annual Koç ARHA graduate symposium encouraged a diverse range of perspectives and disciplines concerned with a span of topics, areas and periods as they relate to food and food production in Anatolia and its surrounding regions, including agriculture, feasting, cooking methods and technologies, and food culture manifested in migration and exchange. Fellow graduate students were asked to consider alternative perspectives and contribute to a greater understanding of food-related practices and implications in Anatolia from the earliest prehistory until the end of the Ottoman Empire.

On Saturday May 3rd, 2014, the Symposium welcomed five speakers from five different countries. Professor Tülay Artan of Sabancı University delivered the keynote speech entitled, "The Humanist Cuisine of Ali Çelebi (of Budin): "The best of the best, and no expense spared"

Papers presented in the Symposium

- Constructing Community Identity: Food and rituals in the Middle Bronze Age site of Hirbemerdon by Dalila Maria Alberghina from Catania University.
- Butches in the Baths by Alexander Brey from Bryn Mawr Universtiy.
- Between Archaeology and Text: The Origins of Rice Consumption and Cultivation in the Middle East ad the Mediterranean by Sureshkuma Muthukumara from University College London.
- Wine Trade Around the Sea of Marmara and Thrace in Byzantine Period Between 7th and 14th Centuries by Murat Yankı.

- Cooking and Serving Practices at an Amorite Palace: An Intact Kitchen Context from Middle Bronze Age Alalakh by Müge Bulu, Koç University.

Employment of our Graduates & Ph.D. placement of our MA students

Comparative Studies in History and Society	Görkem Özizmirli, MA	Boston College, Ph.D., Department of History
Psychology	İrem Korucu, MA	Purdue University, Ph.D. (will attend) Syracuse University, Ph.D. Michigan State University, Ph.D. Lehigh University, Ph.D. University of Nebraska-Lincoln, Ph.D.
Psychology	Elif Durgel , Former MA Graduate	Yaşar University , İzmir Assistant Professor
Economics	Engin İyidoğan, MA	Imperial College London - Finance Oxford - Economics HEC Paris - Strategy and Management The Graduate Institute Geneva - International Economics ESSEC Paris - Economics King's College London - Finance
Economics	Mert Demirer, MA-Ph.D.	Massachusetts Institute of Technology , Ph.D.
Economics	Murat Dikmen, MA	University of Waterloo, system Design Engineering
CSHS	Özgecan Atasoy, MA	University of Cambridge, MPhil, Modern Society and Global Transformations
Economics	Sina Çolak , MA	University of Maryland, Ph.D. Toulouse School of Economics, Ph.D.
Economics	Vyacheslav Arbutov, MA	University of Rochester, Ph.D.
CSHS	Başak Gemici, MA	University of Pittsburgh, Sociology Ph.D.